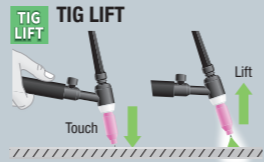
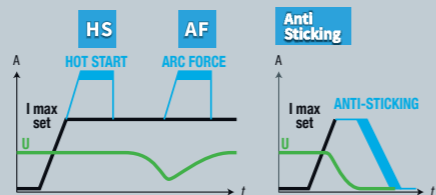




GYSARC

# SMAW MMA INVERTER



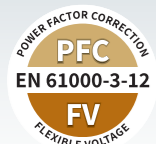
VRD inside

Voltage Reduction Device

Software & Hardware protection

VRD ON VRD OFF

	U <sub>0</sub> =	
220 FV	14 V	80/86 V
300 TRI	20 V	83 V
400 TRI	20 V	84 V



## 4 in 1

- 1 MMA
- 2 TIG DC LIFT  
Torches & consumables p. 31
- 3 GOUGING  
Accessories p. 15
- 4 TIG HF • Exatig



details p.23

110 • 230 V • 1 ~

400 V • 3 ~

GYSARC 220 FV CEL

110 + 230 V • 1 ~  
**220 A** ⚡ Ø 1.6+5 mm

P400 PFC FV

VRD inside HS AF CEL cellulosic

Dynamic arc system MMA PULSE

TIG LIFT TIG PULSE AD IP 23

2 m, 25 mm<sup>2</sup> + 2 m, 25 mm<sup>2</sup>  
065529



PFC POWER FACTOR CORRECTION

185 V ← 265 V

100 m

FV FLEXIBLE VOLTAGE

85 V ← 265 V

100 m

GYSARC 300 TRI

400 V • 3 ~  
**300 A** ⚡ Ø 1.6+6.3 mm

VRD inside HS AF Anti Sticking CEL cellulosic

TIG LIFT IP 23 GOUGING

no accessories:  
064959



GYSARC 400 TRI

400 V • 3 ~  
**400 A** ⚡ Ø 1.6+6.3 mm

VRD inside HS AF Anti Sticking CEL cellulosic

TIG LIFT GOUGING IP 23

no accessories:  
013551



OPTIONS



Pince de gougeage - Gouging Torch  
- Fugenhobel-Zange  
1 000 A  
041516



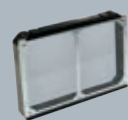
Adaptateur gougeage  
- Gouging clamp adaptor  
- Fugenhobeladapter  
70 mm<sup>2</sup> - 5 m  
040670



Électrodes de gougeage - Gouging  
- Electrodes - Fugenhobelektrode  
- Electrodes de carbono  
Ø 6.4 mm (x50) 086081

OPTIONS

Filter kit  
046580



Hand remote control  
RC-HA1  
8 m  
045675



JOB SITE XL  
600 x 1150 x 584 mm  
039568



MMA KIT 7  
500 A  
047419



L m	model	L m	model	mm <sup>2</sup>	mm <sup>2</sup>
5	SHARK X500.95	4	TYREX 600.95	50	35/50

TIG torch kit SR17 V (valve)  
4 m, 35/50 mm<sup>2</sup>, Ø13  
044401



GYSARC	MADE IN GYS CHINA	~	50/60 Hz	A	A	INTEGRATED TECHNOLOGY							X% GYS (20°C)	EN60974-1 (40°C)			U <sub>0</sub>	cm / kg	Protected & compatible power generator (+/-15%)	
						P400	VRD	HS	AF	Anti sticking	CEL	TIG Lift		IP 23	I (60%)	X% (I2 max)				100%
GYSARC 220 FV CEL	1	230V	16	10+220	■	■	■	■	■	■	■	■	40% @ 220 A	130 A	20%	100 A	86 V	42 × 21 × 35/10.5	8.5 kW	12.5 kVA
		110V	32	10+120	■	■	■	■	■	■	■	■	60% @ 120 A	90 A	30%	70 A	80 V			
GYSARC 300 TRI	3	400V	16	20+300	■	■	■	■	■	■	■	100% @ 300 A	300 A	60%	230 A	83 V	54 × 46 × 28/26	10 kW	12.5 kVA	
GYSARC 400 TRI	3	400V	32	20+400	■	■	■	■	■	■	■	100% @ 400 A	400 A	60%	350 A	84 V	58 × 52 × 30/38	30 kW	36 kVA	



9

GYSARC

MMA • INVERTER

8